

SUBJECT MATTER EXPERT



LEMER
— l'expert —

LEAD AND LOW MELTING POINT ALLOYS



MORE THAN 100 YEARS OF KNOW-HOW

LEMER foundry specialized in low melting point alloys was founded in 1878 by LEMER family. LEMER is based in Nantes, France, from the beginning.

It was acquired in 2016, through a project carried by Pascaline LEMER, some executives & 3 investment funds (ACE Management, Ouest Croissance & Litto Invest).

The team keeps on promoting worldwide the values that made the success of the firm, the quality of its products and the interests of its customers.



Laurent LÉCOLE
General Manager



Bruno GABORIAU
Financial Director



Gilles HASCOËT
Production Manager



Claire DAVID
Purchasing and Support Manager



Maxime QUEMENER
Design Office Manager



François CHATELAIN
Nautical Business Manager
and site director
Loroux Bottereau



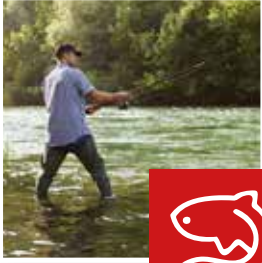
Patrice LIVONNET
Nuclear & Industry
Business Manager - North



Pierre MOULIN
Nuclear & Industry
Business Manager - South

OUR BUSINESS AREAS

> FISHING - DIVING



- > 4000 references
- > 500 tons ready to ship
- > Fishing lead
- > Diving weights (Scuba)
- > The world largest range
- > Sea and river fishing
- > Leisure or competition
- > Bulk, bag, blister, dispenser

> BOATING



High performance keels specialist:

- > Mass production keel / Offshore race / Super yachts
- > Simple keel / Single bulb / Full lead / Combined Iron-Lead
- > From 100 kg to over 50 tons
- > Delivered raw, machined, with composite finishing
- > Integrated engineering service



> BALLAST

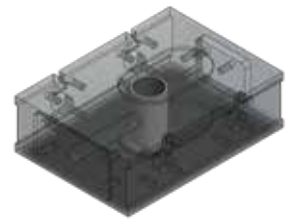


- > Ballast up to 100 tons
- > From unit part to large series
- > Filling of structures
- > Ingots, bags with handles
- > Lead balls
- > Oil rig ballasts
- > Submarine ballasts
- > Public works ballasts

> INDUSTRY



- > Lead seals, lead chips
- > Bushing and battery terminals
- > Balancing weights
- > Counterweights
- > Fusible cores



> RADIATION PROTECTION



- > Manufacturing of unit parts and large series
- > Lead bricks
- > Lead half-shells
- > Transport flasks
- > X-ray cabin
- > Lead castles
- > Laminated lead, Lead balls
- > Lead wool



> LEAD SUBSTITUTES



- > Antimony, tin, bismuth, zinc
- > Centrifugal weights
- > Seals
- > Advertising products
- > Balancing weights
- > Lead chips





QUALITY- HYGIENE- SAFETY - ENVIRONMENT

ISO 9001:2015
BUREAU VERITAS
Certification



> EMPLOYEES HEALTH MONITORING

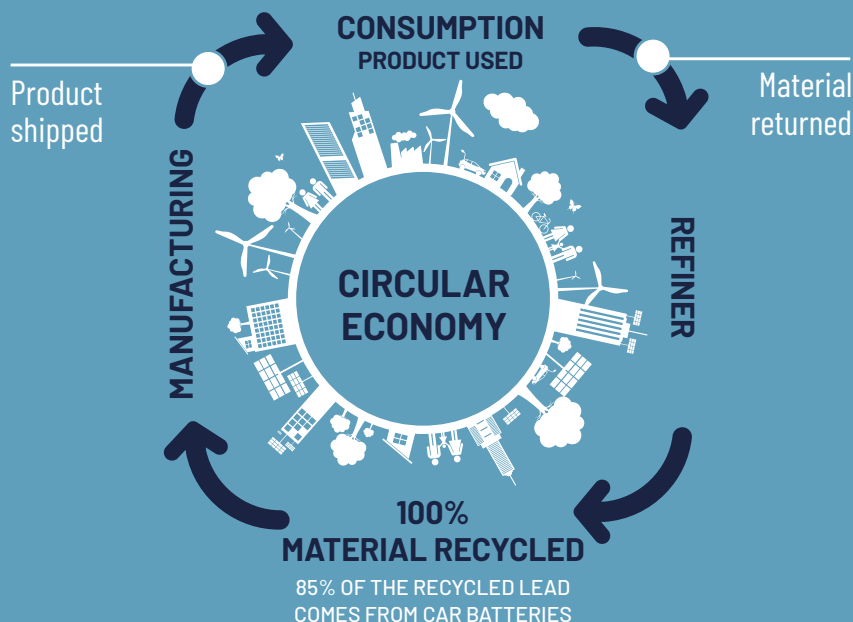
- > Twice a year blood tests for employees
- > Control of the limit value for professional exposure
- > Voluntary and mandatory health and safety committees

> LEGAL: ICPE

- > Installation classified for the protection of the environment under authorization

> FOCUSED ENVIRONMENTAL MONITORING

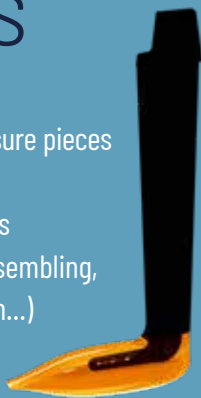
- > Exhaust air: measuring on channelled diffused emissions and atmospheric fallout
- > Quality follow up of ground and storm waters
- > Monitoring of lead levels in the ground



Armelle BOUDAUD
Environmental Health
& Safety Manager

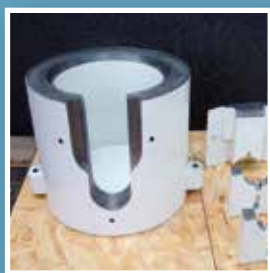
OUR CAPABILITIES

- > Manufacturing of your made-to-measure pieces
- > Pieces up to 50 tons
- > From single parts to production parts
- > From raw parts to finished parts (assembling, painting, nickel plating, plastification...)
- > Solidworks V5 et non Siliworks



OUR ALLOYS

- > Lead, Antimony, Tin, Bismuth
- > Zinc, Copper, Calcium
- > 1 200 tons of lead and alloys handled each year
- > 1 500 tons stored including
- > 500 tons of finished products



OUR PARTNERS



MADE IN FRANCE



LEMER

— l'expert —

CARQUEFOU

3, rue de l'Europe - ZI de Carquefou - 44474 Carquefou Cedex - France
Tél. : +33(0)2 40 25 29 00 - Fax : +33(0)2 40 25 25 42 - E-mail : lemer@fonderie-lemer.com

LE LOROUX BOTTEREAU

ZAC de la Noé Bachelon - 10, rue de l'Industrie - 44430 Le Loroux Bottereau - France
Tél. : +33(0)2 40 33 88 20

www.fonderie-lemer.com

Siren : 812 250 231 - Code NAF : 2599 B - N° TVA : FR 28 812 250 231